

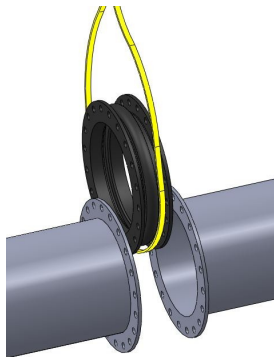
## HOLZ RUBBER GUIDE TO EFFECTIVE INSTALLATION OF AN EXPANSION JOINT



1. Confirm the system operating requirements and assure the expansion joint matches the specified size, material, and capabilities for the application. Inspect the piping to ensure the pipes are properly aligned axially and laterally within 1/8 inch. If the piping is not properly aligned, the pipes should be adjusted. When piping cannot be properly aligned, an offset joint should be used.

2. If required, apply a thin layer of non-petroleum based lubricant, such as soapy water to the flanges. This should ease installation and removal.

3. Carefully install the expansion joint between the mating flanges and align bolt holes. Special care, such as the use of slings should be taken to ensure the expansion joint is not damaged in the process. Continued support of the expansion joint is required until the expansion joint is bolted in place.



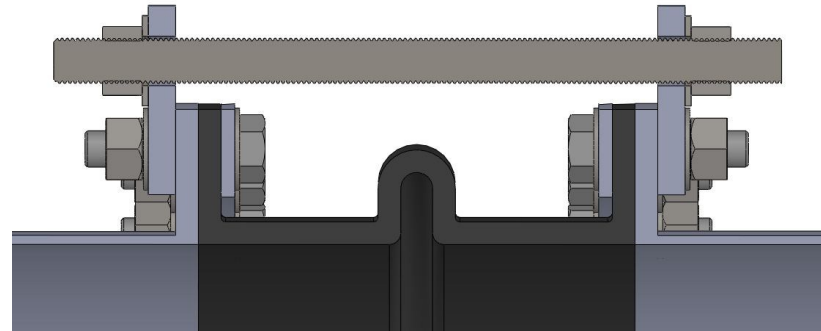
4. Install the flange bolts through the retaining rings, expansion joint and mating flanges from the arch side of the expansion joint. Metal washers are required at all splits of the retaining rings and are recommended on all bolts.



5. Tighten bolts alternately around the flange until nuts are tight and the rubber flange bulges slightly.

6. To prevent leakage, the flange bolts should be retightened after one week of operation and checked periodically, thereafter.

\*Expansion Joint must be installed in the neutral position\*



## STORAGE INSTRUCTIONS



Prevent exposure to ultraviolet (UV) light from direct sunlight

If storage must be outdoors, the expansion joint must be covered with a tarp or heavy plastic



Storage near ozone producing equipment should be avoided



If welding is to occur in the vicinity of the expansion joint, a weld blanket or protective cover should be used to protect the expansion joint

Expansion joint should be stored in a dry, dark, cool warehouse where flooding will not occur

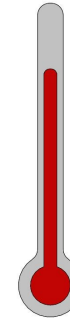
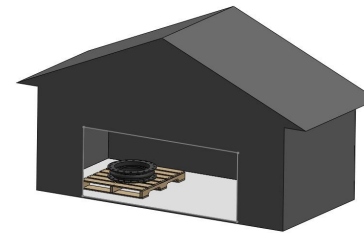
Store flange face down evenly supported on a pallet or wooden platform

Do not store expansion joints in a stacked position for over 30 days



DURING STORAGE

**DO NOT  
STACK**



Ideal storage temperature is 50-70°F

Do not exceed 150°F during storage

For pressure ratings, movements, spring rates, etc. visit [WWW.HOLZRUBBER.COM](http://WWW.HOLZRUBBER.COM)